

Font Control™ v1.11

22 September 1994

Copyright © 1994 by Leaping Lizards

Font Control™ is a trademark of Leaping Lizards

This program is shareware, it is not free. Please register.

What is Font Control?

Getting started with Font Control

Registering Font Control

Product support

Copyright & restrictions

Attention font vendors!

Include Font Control™ with your fonts

You have two weeks to evaluate Font Control. After this period of time, you must either stop using Font Control or register. So far, everyone who has continued to use Font Control has registered it. Or let's put it another way, no one has ever lived to tell what happens after the evaluation period has ended. . .

License your own customized version of Font Control™ to include with your next font CD-ROM or diskette release. With increasing competition in the fonts marketplace, you absolutely NEED to bundle a superb font installer like Font Control™ with your product.

- Enhances your product by making your fonts easier to use than those of other vendors.
- Add value to your product by including a "free" copy of Font Control™.
- A fully working, registered, version, not the shareware version.
- Put your own company's name on it.

Contact Steven Fox by e-mail at riboflavin@twwde.com, or by fax at 886-2-759-1035, to find out how you can have font control.

Font Control™ provides the simplest and fastest way ever to install fonts in Windows 3.1. Font Control keeps a detailed database of every font on your hard disk, and on every disk or CD you install fonts from.

- Unlike the standard Control Panel fonts installer, Font Control doesn't make you fuss with directories, all fonts are presented to you in alphabetical order. You simply choose the fonts you want to install, and install them with a right mouse click.
- Font Control manages TrueType and PostScript (Type1) fonts equally well. Font Control may be the only font installer you'll ever need.
- All fonts can be viewed BEFORE you install them. You'll never again have to second guess what a font looks like before you install it.
- Font Control's simple interface allows you to install, uninstall, copy, find, and delete fonts from a single window.
- If you want, take advantage of Font Control's advanced font management features. These include a configurable ".FOT" location, even add Font Control's icon to Windows' Control Panel.
- Font Control is compatible with all other Windows font managers. You aren't forced to use Font Control exclusively.

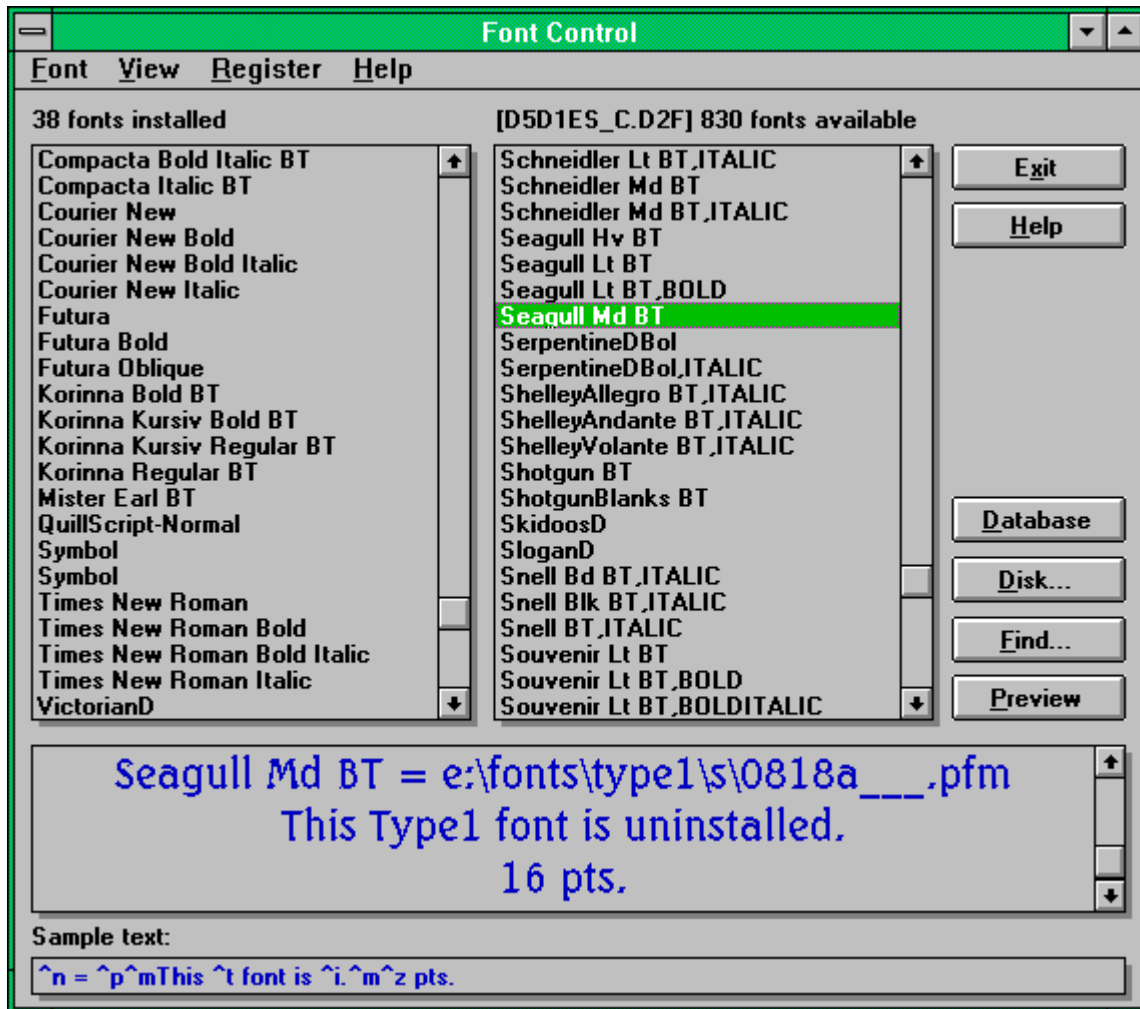
Requirements:

- Windows 3.1, or 3.11
- About 500Kb of additional hard disk space is required for the font database. More space will be required if have more than 2000 fonts, less space if you have few fonts.
- Adobe Type Manager (ATM) 2.5 or higher is required in order to install or preview Type1 fonts without restarting Windows (optional).

What's new in v1.11:

- Find fonts function. Enter a full or partial font name, with wildcards. Font Control will create a list of all known fonts on all your CD-ROMs, floppies, and hard disk.
- Resizable window for viewing fonts at larger sizes.
- All reported bugs fixed.

Click your mouse on the item you need help on.



This list always displays the fonts currently installed in Windows.

This list always displays one of the following:

- All the fonts on your local hard disk(s) which are not currently installed. These are found in your primary font database.
- or -
- All the fonts found on a removable disk, such as a floppy disk or CD-ROM. [Click here for more info.](#)
- or -
- The fonts found after using the Find function.

Tells you how many fonts are installed.

Tells you how many fonts are in the list below. If listing a removable disk, it also displays the volume label of the disk.

Quit Font Control.

Displays this help screen.

Redisplays all the uninstalled fonts in your primary font database (this option is available only after examining a removable disk).

Find specific fonts in your collection by typing the font's name, or find multiple fonts by using wildcards.
[Click here for more info.](#)

Display all the fonts on a removable disk, such as a floppy disk or CD-ROM. [Click here for more info.](#)

Toggles the view window, which allows you to view your fonts before and after they are installed. [Click here for more info.](#)

The view window displays the sample text in the currently selected font. [Click here for more info.](#)

Changes the point size of the displayed text.

Enter text here to be displayed in the view window above. [Click here for more info.](#)

All the fonts in your system should be listed in your primary font database. It doesn't matter whether the fonts are currently installed or not. When Font Control is run for the first time you will be asked to create your primary font database. You may also need to do so later if Font Control reports an error (see below). Otherwise, you should never have to rebuild your primary font database for as long as you use Font Control.

Follow these simple guidelines when creating your primary font database:

- From the list of drives, select all the hard disk drives, and other permanent drives, on your system. Use CTRL and your mouse to select the drives in the list.
- Important: Do not select floppy drives, removable drives, CD-ROM drives, RAM drives, or non-permanent network drives. Doing so now will make them inaccessible by Font Control later on.
- Press "OK".

All the fonts on the selected drives will be located and investigated by Font Control. This may take a few minutes, depending on the speed of your computer and the number of fonts found. A progress bar will remain on the screen to let you know how Font Control is doing.

Afterward, the two font lists will be filled in. The list on the left, the installed fonts list, always displays all the fonts currently installed. The list on the right, the found fonts list, displays all the fonts found on your system which are not currently installed.

- You can hide fonts from Font Control using the "[Hide fonts](#)" menu item. This is useful if you have duplicate fonts, or fonts which you never want Font Control to manage.

Errors:

If Font Control displays a message saying your primary font database needs to be rebuilt, this means it has found fonts which were installed from a drive other than those drives you selected for your primary font database. This can happen if you didn't correctly select all your permanent hard drives, or if fonts stored on other non-permanent drives have been installed using another font utility. In the latter case, rebuilding your primary font database will likely have no effect, since the installed fonts are not on a permanent drive. If you want to install fonts from a non permanent drive without copying them to your hard disk, do so with Font Control so it can keep track of such things.

It is possible that your system has references to fonts which are no longer installed. If you clear all the TrueType fonts from the [Fonts] section of your WIN.INI file, and all the fonts from the [Fonts] section of your ATM.INI file, you will eliminate references to all fonts. Rebuild the primary font database and these errors should be eliminated. Don't forget to reinstall your fonts afterwards (with Font Control).

See also:

[Adding a new disk to your database](#)

[Preferences](#)

[Technical information](#)

[The main screen](#)

[Installing fonts](#)

[Uninstalling fonts](#)

[Deleting fonts](#)

[Hiding selected fonts](#)

After you have created your primary font database, you may want to remove some of your fonts from the database so that Font Control can't manage them. Please note that most users will not need to use this option. However, it is available if you keep duplicate fonts on your hard disk, or if you purposely don't want to use some fonts with Font Control. Once hidden, the fonts will remain unavailable to Font Control until you rebuild your primary font database. This option is only available for fonts in your primary font database. This option does not affect the fonts themselves -- you can still install the fonts using any other font utilities.

- Select the fonts you want to hide from the list on the right. Use CTRL and your mouse to select several fonts at once.
- Select "Hide fonts" from the "Font" menu.

- Font Control consists of the following files in your Font Control directory:

fontctrl.exe	Main program
fontctrl.hlp	This help file
fontcpl.dll	A supplementary file used by the main program
fontctrl.mdb*	The main font database file (Microsoft Access 1.1 format)
fontctrl.ldb*	Used by the main font database
fontctrl.ini*	Stores custom user settings
fontcpl~.tmp*	Temporary file created by main program (automatically deleted)
* created and modified by Font Control	

- The following files install in your WINDOWS\SYSTEM directory:

msaes110.dll	Part of the MS Access database engine
msajt110.dll	" "
vbdb300.dll	" "

- The following sections of your CONTROL.INI file will be modified by Font Control if you add it to Window's Control Panel:

```
[MMCPL]
...
FONTCTRL=c:\fonctrl\fontcpl.dll      'pointer to Font Control's Control
Panel applet

[FontControl]
EXELocation= c:\fonctrl\fontctrl.exe 'pointer to Font Control's main program

[Don't Load]
Fonts=0      'tells Control Panel not to load the standard "Fonts" applet
```

- If you wish, you can modify the following lines of FONTCTRL.INI if your native language is not English (registered version only). These lines are used by the custom text variable, "Installed Status".

```
[Preferences]
InstalledString=installed
UninstalledString=uninstalled
```

- Because Font Control uses the standard Access 1.1 database, it is possible to import the font information in this database into other applications, such as Microsoft Word 6.0, Microsoft Excel 5.0, or Lotus Approach 3.0. The database consists of the following tables:

Table	Field	Description
<i>PrimaryFontDatabase</i>	<i>PATH</i>	The primary font database; this table contains information about all the fonts located on your hard disks
	<i>INENAME</i>	The full path name of the font
	<i>FAMILYNAME</i>	The name of the font as it appears in WIN.INI or ATM.INI
	<i>KIND</i>	The name of the font as it appears in Windows' font menus
	<i>BOLD</i>	True = TrueType, False = Type1
		True = Bold style font

	<i>ITALIC</i>	True = Italic style font
	<i>INSTALLED</i>	(used internally by Font Control)
	<i>EXTERNAL</i>	(used internally by Font Control)
	<i>ID</i>	(used internally by Font Control)
<i>FontControlDisks</i>		This table contains information about the disks Font Control knows about
	<i>LABEL</i>	The volume label of a disk. There will be a corresponding Table with the same name
	<i>FREE</i>	Free space available on the disk
	<i>DRIVELETTER</i>	The letter of the drive the disk was most recently inserted or connected
<i>FontControlSearchResults</i>		The primary font database; this table contains information about all the fonts located on your hard disks
	<i>PATH</i>	The full path name of the font
	<i>ININAME</i>	The name of the font as it appears in WIN.INI or ATM.INI
	<i>FAMILYNAME</i>	The name of the font as it appears in Windows' font menus
	<i>KIND</i>	True = TrueType, False = Type1
	<i>BOLD</i>	True = Bold style font
	<i>ITALIC</i>	True = Italic style font
	<i>DRIVELETTER</i>	The letter of the drive the disk was most recently inserted or connected
	<i>LABEL</i>	The volume label of the disk on which the font is located. There will be a corresponding Table with the same name
	<i>ID</i>	(used internally by Font Control)
<i>XXXXXXXXX_XXX</i>		This table contains information about fonts found elsewhere, not in your primary font database, such as a CD-ROM; the table name is the volume label of the disk
	<i>PATH</i>	The path name of the font, minus the drive letter
	<i>ININAME</i>	The name of the font as it appears in WIN.INI or ATM.INI
	<i>FAMILYNAME</i>	The name of the font as it appears in Windows' font menus
	<i>KIND</i>	True = TrueType, False = Type1
	<i>BOLD</i>	True = Bold style font
	<i>ITALIC</i>	True = Italic style font
	<i>ID</i>	(used internally by Font Control)

When you add a new disk to your database, you are only examining the fonts on a disk and storing the information in the database, you are not installing them yet. Font Control initially needs to check out all the fonts on each floppy disk or CD-ROM, which can sometimes take a while, but afterward, each time you want to add fonts from that disk, Font Control will automatically know all the fonts on that disk and instantly present you with the list of fonts. Font Control keeps a detailed database of all the fonts of every CD-ROM or floppy disk you use.

- Insert the floppy or CD-ROM you want to install fonts from.
- Select the correct drive letter.
- Press "OK".

All the fonts on the disk will be located and investigated by Font Control. This may take a few minutes,

depending on the speed of your computer and the number of fonts found. A progress bar will remain on the screen to let you know how Font Control is doing. Remember, this only happens whenever you add a disk to your database which hasn't been examined before.

Afterward, the list on the right will display all the fonts on that disk. The list on the left always displays the currently installed fonts. To redisplay the fonts in your primary font database, press the "Database" button, or select the "Display primary font database" menu, both on Font Control's main window.

If Font Control determines that the data on a floppy has changed since it was last examined, you will be asked if you want to re-examine all the fonts on that disk. You don't have to if fonts have not been added to or removed from the disk.

- Font Control keeps track of all your disks by noting the volume label of each disk. Typically, CD-ROMs all have unique volume labels. If you use floppies with Font Control, you should insure that all your floppies have volume labels, and that they each be unique volume labels. Otherwise, Font Control will think you have inserted a previous disk and changed the fonts, and Font Control will have to re-examine all the fonts on the disk. You can change the volume label of a floppy disk using Windows' File Manager.

See also:

[The main screen](#)

[Installing fonts](#)

[Deleting fonts](#)

[Copying fonts](#)

Installing fonts makes them available for use by all other Windows applications.

- Select the fonts you want to install from the list on the right. Use CTRL and your mouse to select several fonts at once.
- Select "Install" from the "Font" menu.
- or -
Click your RIGHT mouse button on the list to view a pop-up menu. Select "Install".

Important note: When installing a font listed in your primary font database, it will not be copied to a different location, regardless of the Preferences settings. If you are used to using Control Panel or ATM to install your fonts, you are probably aware that these programs copy your fonts to certain directories every time they install. Font Control does NOT copy fonts that are already on your hard disk -- why should you have unnecessary duplicates of fonts clogging up your hard disk? Font Control will, by default, copy fonts to your hard disk when you install them from a CD-ROM or floppy. You can disable this option in Preferences.

See also:

[Preferences](#)

[The main screen](#)

[Uninstalling fonts](#)

[Copying fonts](#)

[Deleting fonts](#)

Uninstalling fonts makes them unavailable for use by other Windows applications. It does not Delete them from your disk.

- Select the fonts you want to uninstall from the list on the left. Use CTRL and your mouse to select several fonts at once.
- Select "Uninstall" from the "Font" menu.
- or -
Click your RIGHT mouse button on the list to view a pop-up menu. Select "Uninstall".

See also:

[The main screen](#)

[Installing fonts](#)

[Copying fonts](#)

[Deleting fonts](#)

If you know the name of a font you want to install, or if you only know part of the name, or if you are not sure on which CD-ROM or floppy disk the font is located, this function will help you enormously.

- Select "Find fonts..." from the "Font" menu, or press the "Find..." button on the main window.
- Type the name of the font (not the filename).
- You can use the standard DOS wildcards "*" and "?" to find more than one font.

For example:

- "AR*" will find all fonts beginning with the letters "AR"
- "*TH*" will find all fonts which have the letters "TH" together somewhere in the name
- "CO???ER*" will find all fonts that begin with "CO", and have any 3 characters between "CO" and "ER"
- "A*E" will find all fonts that start with "A" and end with "E".

(Font Control does not require quotes, as used in these examples.)

- Click on "Include primary font database" if you also want to include fonts on your hard disk(s) in the search. Normally, only fonts on your CD-ROMs and floppy disks are searched.
- Press "OK".

If any fonts are found, the list on the right will display all matching font names. You can install these fonts in the usual manner, however, you may be prompted to insert the appropriate disk (if necessary) before the install can proceed.

See also:

[Preferences](#)

[The main screen](#)

[Installing fonts](#)

Copying fonts only copies fonts from a floppy or CD-ROM to your hard disk. It does not make them available for use by other Windows applications. Use [Install](#) to make fonts available. Using Font Control to copy fonts automatically adds those fonts to your [primary font database](#) so you won't have to update the entire database later.

- Select "Preferences..." from the "Font" menu. Choose the destination directory (or directories for Type1 fonts).
- Select the fonts you want to copy from the list on the right. Use CTRL and your mouse to select several fonts at once.
- Select "Copy (don't install)" from the "Font" menu.
 - or -
 - Click your RIGHT mouse button on the list to view a pop-up menu. Select "Copy (don't install)".

When you copy fonts, the destination directory (or directories) are those defined in the Preferences window.

See also:

[Preferences](#)

[The main screen](#)

[Installing fonts](#)

[Uninstalling fonts](#)

[Deleting fonts](#)

Deleting fonts physically deletes fonts from your hard disk. Only delete fonts you won't ever want to use again (if you might need to use a font at a later time, use [Uninstall](#) instead, don't delete). The selected fonts will be uninstalled first, if necessary, before they are deleted. Using Font Control to delete fonts automatically deletes those fonts from your [primary font database](#) so you won't have to update the database later.

- Select the fonts you want to delete from the list on the left. Use CTRL and your mouse to select several fonts at once.
- Select "Delete" from the "Font" menu.
 - or -
 - Click your RIGHT mouse button on the list to view a pop-up menu. Select "Delete".

See also:

[The main screen](#)
[Uninstalling fonts](#)
[Installing fonts](#)
[Copying fonts](#)

Use your mouse to select a font, in either list. It doesn't matter whether the font is installed or not, Font Control can display it. The scroll bar on the right hand side of the sample window changes the text size. The sample text can be modified by typing in new text on the sample text line. The sample text line allows you to insert several variables and control codes in a line of text.

For example:

```
^n = ^p^mThis ^t font is ^I.^m^z pts.
```

Will display:

Arial = c:\windows\system\arial.ttf
This TrueType font is installed.
14 pts.

Below is a list of all the variables with an example:

Variable	Description	Example
^n	Font name	Arial Bold Italic
^p	Path name	c:\windows\system\arialbi.ttf
^f	Font file name	arialbi.ttf
^t	Font type	TrueType
^s	Font file size	71,880
^e	Font file time	3:10:00 AM
^d	Font file date & time	March 10, 1992, 3:10:00 AM
^i	Installed status	not installed
^z	Point size	20
^u	User name	Ren Hoek
^m	New line	<i>(prints subsequent text on a new line)</i>
^^	Caret symbol	^

- You can configure Font Control to display only TrueType or only Type1 fonts in its lists. The default is both TrueType1 and Type1 fonts.
- If you wish, you can configure Font Control to display fonts by their full path name, instead of by their actual font name. The default is the actual font name.
- Selecting "Preview fonts" (or pressing the "Preview" button) enlarges the main Font Control window and allows you to view and preview fonts.
- Select "Uppercase only" to view your fonts in uppercase letters. This is useful when viewing "caps only" fonts.

See also:

[The main screen](#)

[Viewing and previewing fonts](#)

If you are using an older version of Adobe Type Manager (ATM versions under 2.5 qualify as older versions), you will have to restart your computer in order for your Type1 font changes to take effect. You may also have to restart if you have changed the "TrueType enabled" , or "ATM enabled" options.

Enter your name, exactly as printed on your registration notice. Then enter your unique id number, exactly as printed on your registration notice. Press "OK" to complete the registration.

You won't have to enter your registration data again. If you later install an update of Font Control™, it will locate your registration information and automatically register itself the first time it is run.

See also:

[How to register](#)

Font Control™ is distributed as shareware. This gives you the privilege of trying out this program before you pay for it. It doesn't mean it's free. Of course, you already know this.

It's only \$25 !!!

In order to encourage you to register, the shareware version of Font Control is not crippled. All controls and options are fully functional. Registering Font Control will allow you to, once again, sleep at night, and, you will receive the special code which will fully enable the FONTCTRL.INI file so you can save all your customized settings. Registering will also turn off that flashing neon sign that you must be familiar with by now. Unlike some other shareware utilities, your registration code is guaranteed to be valid for all subsequent versions of Font Control for Windows 3.x!

You can register Font Control with Master Card, Visa, American Express, or Discover, from *Public (software) Library (PsL)*, a very reputable and well established shareware distributor which offers a registration service to shareware authors.

If you don't have a credit card, you can mail PsL a cheque by regular mail, make the cheque payable to "Public (software) Library", not Leaping Lizards.

Toll-free (voice)

1-800-2424-PSL

Outside the US (voice)

1-713-524-6394

Fax

1-713-524-6398

CompuServe E-Mail

71355,470

Internet E-Mail

71355.470@Compuserve.Com

Regular mail

Public (software) Library
P.O. Box 35705
Houston, TX 77235-5705, USA

THE ABOVE NUMBERS ARE FOR ORDERS ONLY.

Any questions about the status of the shipment of the order, refunds, registration options, product details, technical support, volume discounts, dealer pricing, site licenses, etc., must be directed to Leaping Lizards.

Please don't call PsL for anything except registering or ordering.

PsL will notify me by e-mail the day of your order, and I will send your registration directly to you by regular mail, or by e-mail. Allow only 2 to 4 days for delivery by e-mail, but you must allow 2 to 4 weeks for delivery by regular mail (don't forget, it's coming from Taiwan), **PLEASE BE PATIENT**. It costs me money every time you call PsL and ask where your registration is. Anyway, all they do is just pass your message on to me (and charge me for the service). So if you're desperate, please send me e-mail or send me a fax.

Your special code, and the latest news about Font Control, will be delivered all the way from Taiwan, with some pretty neat looking Chinese stamps on it. Not bad for 25 bucks, right? Please note that I don't send out disks anymore because I've had too many problems with them being intercepted or damaged enroute - it's really hit and miss. Anyhow, the "unregistered" version is exactly the same as the "registered" version, only minus your ID code. Once you enter your code, it will automatically update itself to the "registered" version.

See also:

[How to obtain product support](#)

[Copyright & restrictions](#)

I can respond to questions from registered and non-registered users of Font Control only by e-mail.

Riboflavin@twwde.com

-or-

stevefox@c2.hinet.net

You can send e-mail to these addresses from nearly all the major on-line services around the world, such as Internet, CompuServe, BIX, FidoNet, AOL, Prodigy, as well as many BBS systems.

I welcome comments and suggestions by fax although I am unable respond by fax. My fax number is: 886-2-759-1035.

Please do not contact PsL for product support. They can not help you.

Font Control™ and this documentation were written by Steven Fox, who is the sole owner of this piece of intellectual copyright, and who will not accept any responsibility if Font Control destroys your computer.

Shareware dealers*: You are permitted to distribute Font Control as long as you distribute the unaltered FONTCL11.ZIP archive file you received. You may charge a fee for such distribution as long as it is less than US\$5, and that it is made quite clear before distribution that this software is shareware and that an additional fee is required by the author. *If you can not abide by this notice, I reserve the right to refuse further distribution of Font Control by your company.*

CD-ROM, magazine and book publishers*: Please contact me directly for more information if you want to include Font Control on your CD-ROM, book or magazine. Please include details about your publication including list price, est. number of readers/users. *Without written or e-mail permission from me, you do not have the right to publish Font Control. Period.*

Free or subscription on-line services, archive sites, and BBSs*: If you fall into this category, you can post FONTCL11.ZIP. No sweat.

Commercial font vendors: Don't use the shareware version -- instead include a registered OEM version of Font Control™ with your fonts. [Click here for more info.](#)

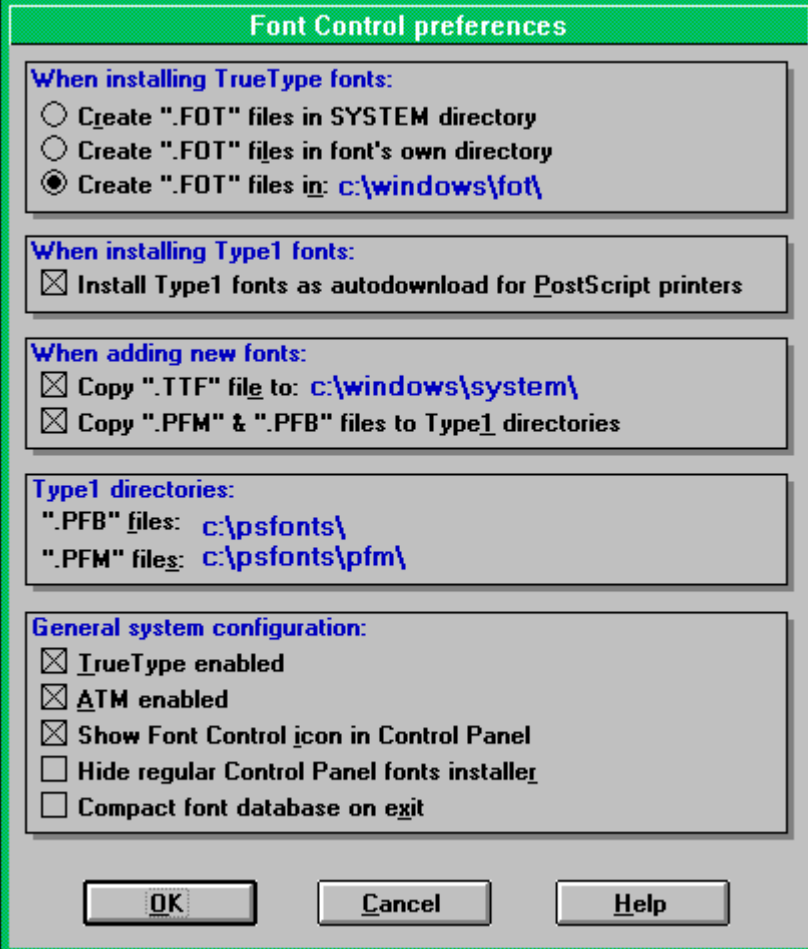
Everyone else: *Free distribution is most important* to the success of Font Control. If you like Font Control and have a modem, please do everyone a favor and upload the unaltered FONTCL11.ZIP to as many sites or BBSs as you possibly can. If you don't have a modem, stand outside your local supermarket and see if you can give away a few copies. Your effort will be much appreciated by everyone.

****exceptions to the above notices:***

- *If you received this program on a disk, directly from me, that means I am already familiar with your service and that I want you to distribute my software, even if you might not necessarily abide by my stated guidelines.*
- *If you are an on-line service, or some sort of on-line archive site, and you allow the issue of CD-ROMs containing files from your archives, you have permission to include this version of Font Control on this disk.*

After you register, Font Control will automatically save all the settings below. All these settings are functional in the shareware version, however, they will always revert to a default setting each time you use Font Control.

Click your mouse on the item you need help on.



The image shows a dialog box titled "Font Control preferences" with a green header bar. It contains several sections of settings:

- When installing TrueType fonts:**
 - Create ".FOT" files in SYSTEM directory
 - Create ".FOT" files in font's own directory
 - Create ".FOT" files in: `c:\windows\font\`
- When installing Type1 fonts:**
 - Install Type1 fonts as autodownload for PostScript printers
- When adding new fonts:**
 - Copy ".TTF" file to: `c:\windows\system\`
 - Copy ".PFM" & ".PFB" files to Type1 directories
- Type1 directories:**
 - ".PFB" files: `c:\psfonts\`
 - ".PFM" files: `c:\psfonts\pfm\`
- General system configuration:**
 - TrueType enabled
 - ATM enabled
 - Show Font Control icon in Control Panel
 - Hide regular Control Panel fonts installer
 - Compact font database on exit

At the bottom of the dialog are three buttons: "OK", "Cancel", and "Help".

For TrueType fonts, the SYSTEM directory is the default. Whenever you install a font, the corresponding .FOT file will be created in your WINDOWS\SYSTEM directory. This option mimics the behavior of Windows' Control Panel.

Font's own directory allows you to keep your matching TrueType .TTF and .FOT files in the same directory. This option is useful for network users who don't have write access permission to a server's WINDOWS directory, or for people who just hate to have a cluttered WINDOWS\SYSTEM directory. Note that you won't be able to install fonts from a CD-ROM or from a network directory without write access when this option is selected.

Specific directory allows you to specify a directory where all TrueType .FOT files will be created, no matter where the original .TTF file resides. After selecting this option, you must enter a valid full path.

When installing a Type1 font, this option will add the accompanying .PFB file to any PostScript printer entries in the WIN.INI file. This allows Windows to download the font as a soft font while printing. For example the following line does not autotownload the font:

```
softfont1=c:\psfonts\pfm\alphabet.pfm
```

The following line will autotownload the same font:

```
softfont1= c:\psfonts\pfm\alphabet.pfm, c:\psfonts\alphabet.pfb
```

If you do not use a PostScript printer, this option has no effect.

When installing a TrueType font from a CD-ROM or floppy, this option lets you designate if, or where, the font will be copied to before it is installed. If you do not want to copy a font before installing it, uncheck this option. By default, all fonts will be copied to your WINDOWS\SYSTEM directory.

When installing a TrueType font listed in your primary font database, this has no effect. These fonts will never be copied.

The "Copy fonts" menu command also uses the directory specified here. If this option is switched off, you will not be able to copy TrueType fonts using Font Control.

When installing a Type1 font from a CD-ROM or floppy, this option lets you designate if the font's files will be copied before the font is installed. If you do not want to copy a font before installing it, uncheck this option. By default, all fonts will be copied to the same directories used by Adobe Type Manager (ATM).

When installing a Type1 font listed in your primary font database, this has no effect. These fonts will never be copied.

If this option is switched off, you will not be able to copy Type1 fonts using the "Copy fonts" menu command.

This option specifies where your Type1 fonts will be copied to before they are installed, but only if the above copy option is checked.

It also specifies where Font Control will look for your Type1 font files. By default, Font Control will look for Type1 fonts in the same directories used by Adobe Type Manager (ATM). You may change these directories if you wish, however, it is recommended you do not change these directories in order to remain compatible with ATM.

Enables or disables TrueType fonts. After this option is changed you must restart Windows for the option to take effect.

Enables or disables Type1 fonts using Adobe Type Manager (ATM). After this option is changed you must restart Windows for the option to take effect.

Adds or removes the Font Control "lasso" icon in Windows' Control Panel.

Hides or shows the regular "Fonts" icon in Windows' Control Panel. This option is only available if you add the "Font Control" icon to Windows' Control Panel. You may choose to do this if you prefer to make Font Control your default font installer.

Use this option once in a while to compact the data in your database. You may be able to save a few Kb of disk space by doing so.

Press "OK" to select your changes, press "Cancel" to revert to the original settings. Press "Help" to see this help screen.

Adobe Type Manager (also known as ATM) is a commercial product published by Adobe Systems Incorporated. ATM allows you to use PostScript Type1 fonts in Windows 3.1.

